



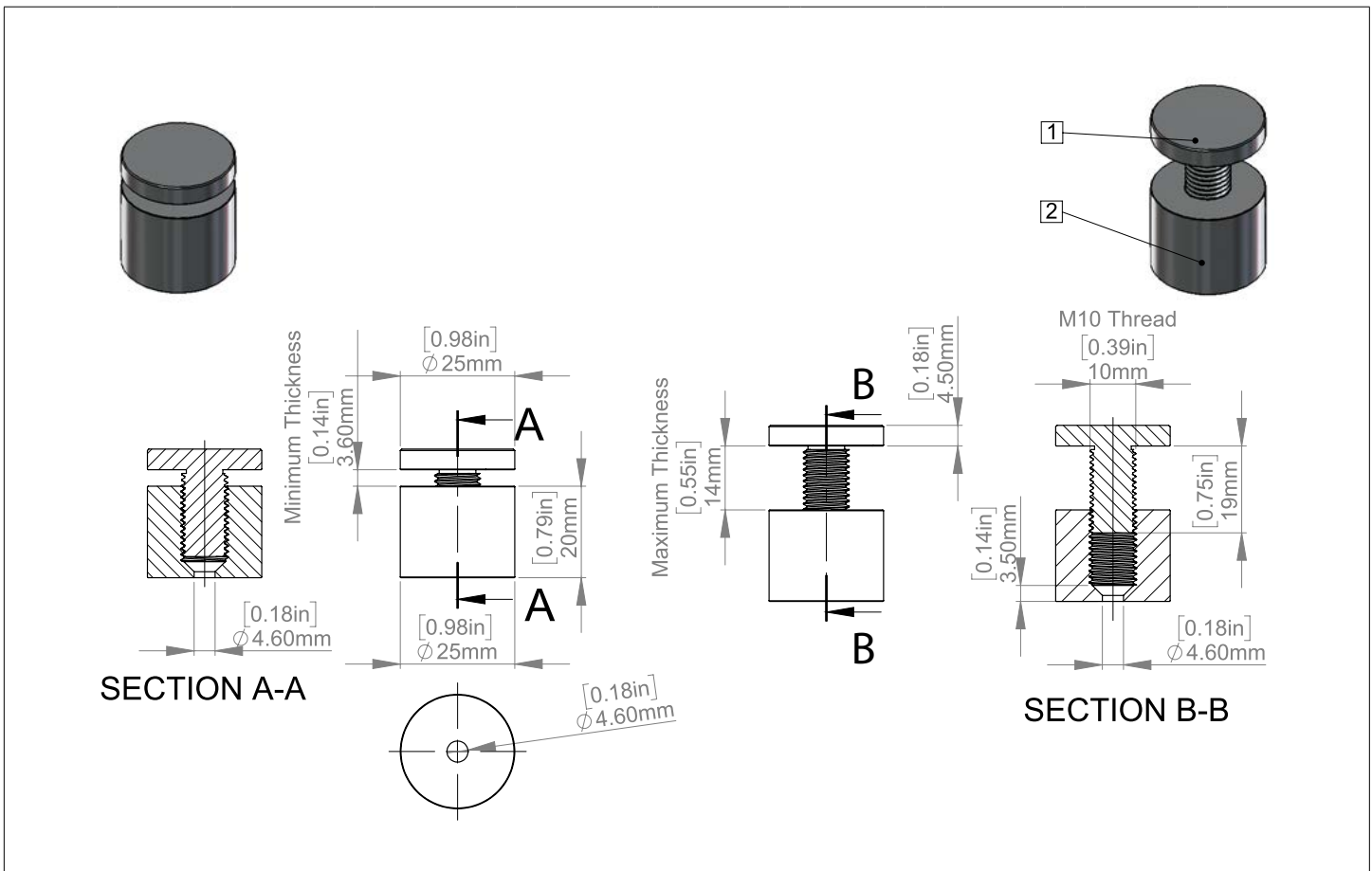
Acrylic Wall Frame Kits

Specifications and Instruction Guide

SKU	WAC2436-C-AS25-25SL	WAC2436-C-AS25-25BK	WAC2436-C-AS25-25GD	WAC2436-C-AS25-25BR
	WAC2436-C-SBLS25-25	WAC2436-C-SBLP25-25		

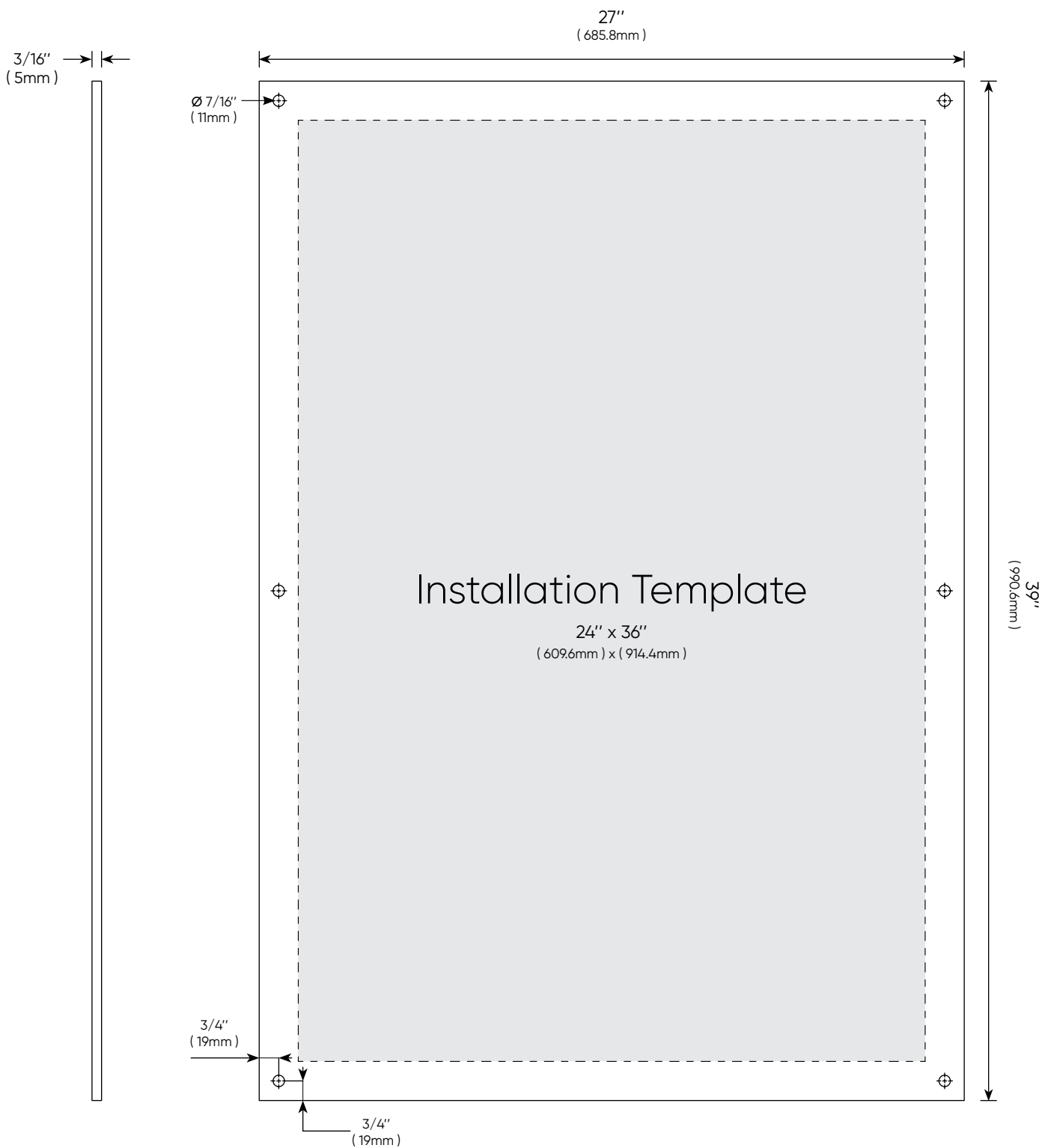
- Package Includes**
- ▶ 2 x Acrylics
 - ▶ 6 x Standoffs
 - ▶ 6 x Screws and Anchors
 - ▶ 1 x Drill Template
 - ▶ 1 x Instruction Guide

Standoffs	AS25-25SL	AS25-25BK	AS25-25GD	AS25-25BR	SBLS25-25	SBLP25-25		
Diameters	1" (25mm)			Distance From Wall	3/4" (20mm)			
Material Thickness Accepted	Between (0" and 9/16")			Thread	Metric M10			
Aluminum	<ul style="list-style-type: none"> ▶ Silver Anodized ▶ Black Anodized ▶ Champagne Anodized ▶ Gold Anodized 			Stainless Steel	<ul style="list-style-type: none"> ▶ Satin Brushed ▶ Polished 			
Washers	No			Washers	x 12			



Acrylics	WAC2436-C
-----------------	------------------

Frame Width	27" (685.8mm)	Frame Height	39" (990.6mm)
Insert Width	24" (609.6mm)	Insert Height	36" (914.4mm)
Top Thickness	3/16" (5mm)	Bottom Thickness	3/16" (5mm)
Pre-Drill Holes	6 x Ø 1/2" (12.7mm)	Finish	All edge polished Ultra-Fine



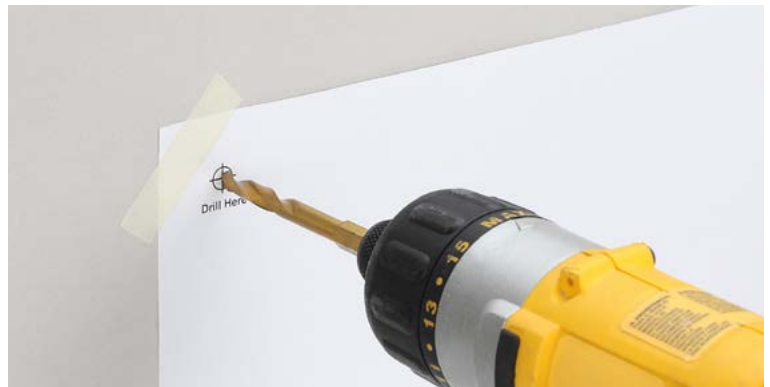
Installation Steps

Directions

- 1 Place template on wall with tape. Make sure that template is level. Mark the hole locations.



- 2 Drill a 1/4" hole in to the wall where marks were made.



- 3 Insert supplied anchors into the wall.



- 4 Mount the barrels to the wall.



Installation Steps

Directions

- 5 Remove plastic film from the back of the panels. Center your image onto one of the panels and sandwich the second panel on top of the image making sure all of the edges and holes are aligned.



- 6 Place the sandwiched panels over the standoff barrels, insert the screw caps through the holes and into the barrels. Hand tighten the screw caps to secure both the panels and image in place.



This document and the product mentioned in reference are the exclusive property of MBS-Standoffs, they can not be used, reproduced, disclosed or disclosed without prior authorization!